

Blackstone Diversified Multi-Strategy Fund

Blackstone

(BXDMSIU: Class I (USD) Acc.) - A sub-fund of Blackstone Alternative Investment Funds plc, an umbrella fund established as a UCITS with segregated liability between sub funds
For Reporting Purposes Only

As of October 31, 2016

| Fund Net Performance ⁽¹⁾⁽²⁾ | MTD | QTD | YTD | ITD | ITD STATISTICS | | | |
|--|---------|---------|-------|-------|----------------|--------|-------|--------|
| | | | | | St Dev. | Beta | Alpha | Sharpe |
| BXDMSIU | 0.58% | 0.58% | 0.19% | 1.71% | 3.82% | - | - | 0.42 |
| MSCI World TR Index | (1.91%) | (1.91%) | 4.04% | 1.35% | 12.79% | 0.17 | 1.85% | 0.10 |
| Barclays Gbl Agg Index | (2.78%) | (2.78%) | 6.80% | 0.55% | 5.15% | (0.17) | 2.51% | 0.09 |

Monthly Net Performance ⁽¹⁾⁽³⁾

| | Jan | Feb | Mar | Apr | May | Jun | Jul | Aug | Sep | Oct | Nov | Dec | YTD |
|------|---------|---------|-------|---------|-------|---------|-------|---------|---------|-------|---------|---------|-------|
| 2014 | - | - | - | - | - | - | - | - | (0.10%) | 0.60% | (0.20%) | (0.20%) | 0.10% |
| 2015 | 0.40% | 1.39% | 1.18% | (0.39%) | 1.27% | (0.77%) | 1.84% | (0.76%) | (1.05%) | 0.68% | 0.67% | (1.05%) | 3.40% |
| 2016 | (1.93%) | (2.56%) | 1.31% | 1.30% | 0.89% | (0.88%) | 0.99% | (0.39%) | 0.98% | 0.58% | | | 0.19% |

Investment approach

The Fund's investment objective is to seek capital appreciation. The Fund seeks this objective by allocating its assets among a variety of discretionary sub-advisers with experience managing non-traditional or "alternative" investment strategies. Blackstone is responsible for selecting the strategies, for identifying and retaining sub-advisers, and for determining the amount of Fund assets to allocate to each strategy and to each sub-adviser. Blackstone may also manage a portion of the Fund's assets directly.

Fund highlights

| | |
|----------------------------|--|
| Fund Assets (Mn) | \$1,634.87 |
| NAV per Share | \$10.37 |
| Currency | USD |
| Share Class Inception Date | September 10, 2014 |
| Investment Manager | Blackstone Alternative Investment Advisors LLC |
| Subscriptions | Daily |
| Redemptions | Daily |
| Distributing/Accumulating | Accumulating |
| Cut-off | 3pm (Ireland) |
| Bloomberg Ticker | BXDMSIU ID |
| ISIN | IE00BN8SY379 |

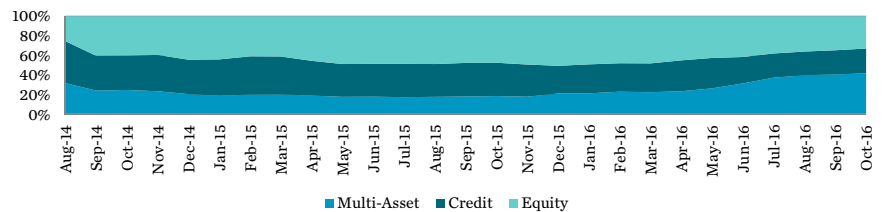
Fund Terms – Share Class I (USD) Acc. ⁽⁵⁾

| | |
|---------------------------------|--------------|
| Minimum Initial Investment (Mn) | \$5.00 |
| Management Fee | 1.40% |
| Performance Fee ⁽⁶⁾ | 15.00% |
| Other Expenses ⁽⁷⁾ | Capped 0.45% |

12 Month Performance Periods – To Last Quarter End ⁽¹⁾⁽²⁾

| | 9/30/2011 - 9/30/2012 | 9/30/2012- 9/30/2013 | 9/30/2013 - 9/30/2014 | 9/30/2014- 9/30/2015 | 9/30/2015- 9/30/2016 |
|------------------------|-----------------------|----------------------|-----------------------|----------------------|----------------------|
| BXDMSIU | N/A | N/A | N/A | 3.30% | (0.10%) |
| MSCI World TR | N/A | N/A | N/A | (4.57%) | 12.02% |
| Barclays Gbl Agg Index | N/A | N/A | N/A | (3.27%) | 8.83% |

Asset Allocation by Sub-Strategy ⁽⁴⁾



Portfolio Allocation ⁽⁴⁾

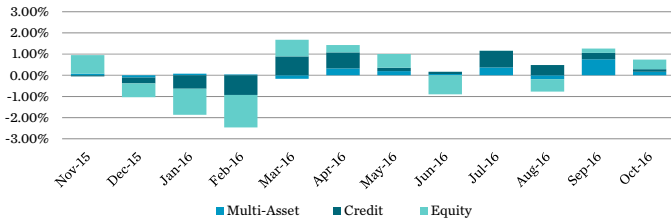
| SUB-ADVISOR | STRATEGY | SUB-STRATEGY | ALLOCATION | |
|-----------------------------|-----------------------|--------------------------------|------------|-----|
| Railsplitter | Fundamental | Equity (Long/Short) | 33% | |
| GSIS | Fundamental | Equity (Long/Short) | | |
| HealthCor | Fundamental | Equity (Long/Short) | | |
| Wellington | Fundamental | Equity (Long/Short) | | |
| Senfina ⁽⁸⁾⁽⁹⁾ | Fundamental | Equity (Market Neutral) | | |
| Cerebellum ⁽⁹⁾ | Quantitative | Equity (Market Neutral) | | |
| Two Sigma Advisers | Quantitative | Equity (Market Neutral) | | |
| Alpha Parity | Quantitative | Multi-Asset (Macro Systematic) | | 42% |
| IPM | Quantitative | Multi-Asset (Macro Systematic) | | |
| Emso | Global Macro | Multi-Asset (Macro EM-Credit) | | |
| BAlA-Direct ⁽¹⁰⁾ | Multi-Strategy | Multi-Asset (Multi-Strategy) | | |
| Chatham | Opportunistic Trading | Credit | 25% | |
| Cerberus | Opportunistic Trading | Credit (MBS/ABS) | | |
| Bayview | Fundamental | Credit (MBS/ABS) | | |
| Caspian | Fundamental | Credit | | |
| Good Hill | Fundamental | Credit (MBS/ABS) | | |
| Sorin | Fundamental | Credit (MBS/ABS) | | |
| Waterfall | Fundamental | Credit (MBS/ABS) | | |

- (1) Fund performance is shown net of all fees and expenses. Past performance may not be a reliable guide to future performance. The value of Fund shares may go down as well as up and there can be no assurance that the Fund will achieve its investment objectives or avoid significant losses. Performance is estimated and unaudited for 2016. Net performance for the Fund as well as indices is from 9/10/14 to 10/31/16 and is annualized.
- (2) The indices presented are indicative and for illustrative purposes only. The volatility of the indices presented may be materially different from that of the performance of the Fund. In addition, these indices employ different investment guidelines and criteria than the Fund; as a result, the holdings in the Fund may differ significantly from the securities that comprise the indices. The performance of these indices has not been selected to represent an appropriate benchmark to compare to the performance of the Fund, but rather is disclosed to allow for comparison of Fund performance to that of well-known and widely recognized indices. A summary of the investment guidelines for these indices is available upon request. In the case of equity indices, performance of the indices reflects the reinvestment of dividends. Beta and Alpha represents BXDMSIU compared to the specific indices. Standard deviation and Sharpe calculations are annualized. All Inception to Date Statistics are calculated using daily performance since Inception.
- (3) Performance is presented through October 31, 2016. Performance is estimated and unaudited for 2016. Net performance is net of all fees and expenses. Performance data quoted represents past performance and does not guarantee future results. The investment return and principal value of an investment will fluctuate so that an investor's shares, when redeemed, may be worth more or less than their original cost and current performance may be lower or higher than the performance data quoted. Additional information and current performance data is available at www.blackstone.com/bxdms. BXDMSIU launched on September 10, 2014 and thus performance for September 2014 is limited to September 10 through September 30.
- (4) The portfolio allocations in the table/chart reflect allocations as of the date of the report. The Fund may shift allocations among sub-advisers, strategies and sub-strategies at any time. Further, Blackstone, on behalf of the Fund, may determine to not employ one or more of the above-referenced sub-advisers, strategies or sub-strategies. Blackstone may also add new sub-advisers, strategies or sub-strategies. Accordingly, the allocations are presented for illustrative purposes only and should not be viewed as predictive of the ongoing composition of the Fund's portfolio (and its sub-advisers), which may change at any time.
- (5) The above terms are summarised and qualified in their entirety by the more detailed information set forth in the UCITS prospectus and supplement.
- (6) The Fund will pay to Blackstone a performance fee equal to 15% of any returns the relevant class achieves above any losses carried forward from previous periods. The Fund may also pay to Blackstone an additional performance fee equal to the amount of any performance fees owed by Blackstone to the sub-advisers. Any such additional performance fee will be deducted from Blackstone's performance fee before it is paid in subsequent quarterly performance periods. The performance fee together with any additional performance fee are subject to a cap of 4.95% of the NAV of the class.
- (7) Blackstone has agreed to reimburse the Fund so that certain of the Fund's "Other Expenses" will not exceed 0.45% annually. Please see important disclosure information at the end of this document for further explanation.
- (8) Blackstone Senfina Advisors L.L.C. "Senfina" is an indirect wholly-owned subsidiary of The Blackstone Group L.P., a publicly traded master limited partnership that has units that trade on the New York Stock Exchange under the symbol "BX." Senfina is an affiliate of BAlA, the Fund's investment adviser, on the basis that it is under common control with BAlA. The investment by BXDMS with Senfina benefits Blackstone and a withdrawal from Senfina would be detrimental to Blackstone.
- (9) Sub-adviser is not currently managing any Fund assets. Allocations may change at any time without notice.
- (10) BAlA manages a portion of the Fund's assets directly. Such assets ("BAlA-Direct") include allocations to a risk premia trading strategy and may also include collective investment schemes and/or opportunistic trades. BAlA's fees on directly managed assets are not reduced by a payment to a sub-adviser.

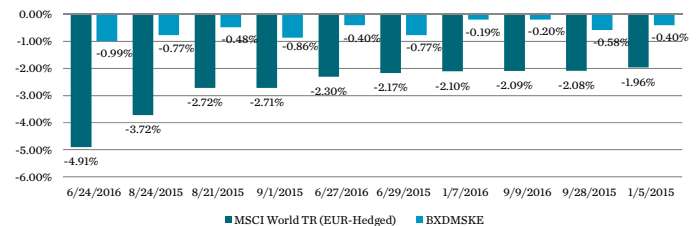
Performance Summary

| Sub-Strategy Performance ⁽²⁾ | Allocation at ⁽⁵⁾ 10/31/2016 | | MTD | | QTD | | YTD | | ITD Cumulative Performance | |
|---|--|-------------|---------|-------------|--------|-------------|---------|-------------|----------------------------|-------------|
| | Return | Attribution | Return | Attribution | Return | Attribution | Return | Attribution | Return | Attribution |
| Equity | 32.75% | 1.12% | 0.45% | | 1.12% | 0.45% | (3.38%) | (1.80%) | 6.83% | 3.26% |
| Credit | 25.29% | 0.41% | 0.12% | | 0.41% | 0.12% | 6.53% | 1.96% | 6.10% | 1.96% |
| Multi-Asset | 41.96% | 0.34% | 0.16% | | 0.34% | 0.16% | 4.26% | 1.60% | 10.66% | 3.14% |
| Expenses and Other | | | (0.15%) | | | | (0.15%) | (1.56%) | | (4.65%) |
| Net Return ⁽²⁾ | | | 0.58% | | | 0.58% | | 0.19% | | 3.70% |

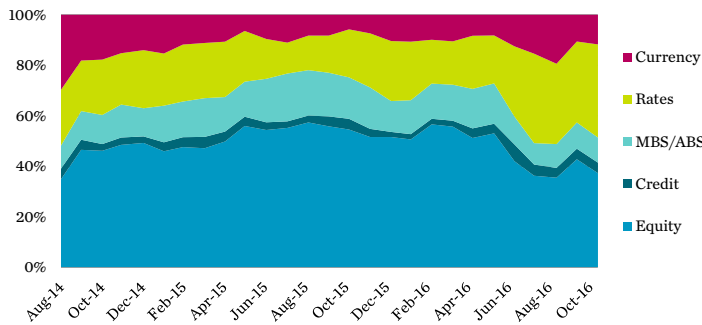
Trailing 12 months performance contribution by Sub-Strategy⁽³⁾



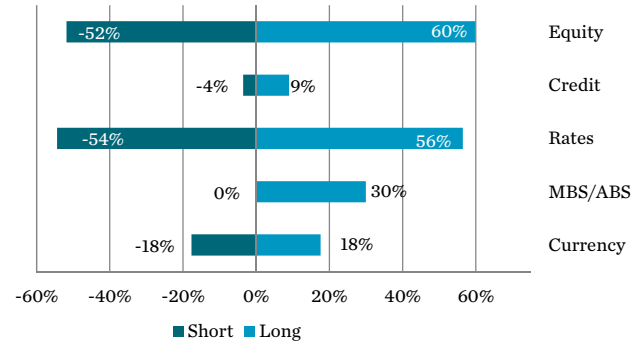
Downside Protection: Worst 10 Days for MSCI World vs BXDMS Fund Since Inception⁽²⁾⁽⁶⁾⁽⁷⁾



Asset Class Gross Historical Exposure⁽⁴⁾⁽⁵⁾⁽⁷⁾



Asset Class Exposure⁽⁴⁾



Fund Geographic Exposure⁽⁴⁾

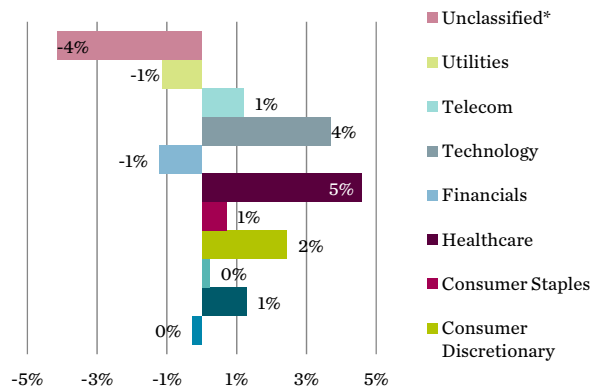
| Region | Long | Short | Net |
|-------------------------|----------------|----------------|---------------|
| US/Canada | 98.03% | 55.41% | 42.62% |
| Latin America/Caribbean | 12.31% | 1.23% | 11.08% |
| Core Europe | 40.62% | 42.00% | -1.38% |
| Peripheral Europe | 7.65% | 0.13% | 7.52% |
| Middle East/Africa | 1.77% | 4.39% | -2.63% |
| China/HK/Taiwan | 0.47% | 2.23% | -1.76% |
| Asia general | 6.41% | 8.15% | -1.74% |
| Japan | 5.53% | 14.00% | -8.46% |
| Total | 172.79% | 127.53% | 45.26% |

Currency Exposure⁽⁴⁾

| Region | Long | Short | Net |
|--------------------|---------------|---------------|---------------|
| US/Canada | 8.61% | 1.34% | 7.27% |
| Latin America | 2.30% | 0.69% | 1.61% |
| Core Europe | 0.88% | 9.86% | -8.98% |
| Peripheral Europe | 3.12% | - | 3.12% |
| Middle East/Africa | 0.97% | 3.33% | -2.35% |
| China/HK/Taiwan | 0.02% | 0.62% | -0.60% |
| Asia general | 0.92% | 0.91% | 0.00% |
| Japan | 0.72% | 0.96% | -0.24% |
| Total | 17.55% | 17.72% | -0.17% |

- Sub-strategy performance is shown gross of all fees and expenses. Performance is estimated and unaudited.
- Fund performance is shown net of all fees and expenses. Past performance may not be a reliable guide to future performance. The value of Fund shares may go down as well as up and there can be no assurance that the Fund will achieve its investment objectives or avoid significant losses. Performance is estimated and unaudited for 2016. Net performance for the Fund as well as indices is from 9/10/14 to 10/31/16 and is annualized. ITD net return is cumulative not annualized.
- Performance contribution represents the contribution of each strategy or sub-strategy to the Fund's total return. Performance contribution is shown gross of all fees and expenses.
- In the case of non-interest rate instruments, exposure data represents the delta adjusted market value. In the case of interest rate products, exposure data is represented by the 10-year equivalent instrument. Positions of unknown type (if any) are excluded from exposure data. Data is obtained from State Street Fund Services (Ireland) Limited, the administrator for the Fund. The Fund does not guarantee the accuracy of such data.
- Sub-strategy allocations exclude exposures to Fund level cash, hedging and expenses and are adjusted pro-rata to equal 100%.
- The indices presented are indicative and for illustrative purposes only. The volatility of the index presented may be materially different from that of the performance of the Fund. In addition, the index employs different investment guidelines and criteria than the Fund; as a result, the holdings in the Fund may differ significantly from the securities that comprise the index. The performance of the index has not been selected to represent an appropriate benchmark to compare to the performance of the Fund, but rather is disclosed to allow for comparison of the Fund's performance to that of well-known and widely recognized index. A summary of the investment guidelines for the index presented is available upon request. Performance of the index reflects the reinvestment of dividends. Please see glossary of terms at the end of this presentation for index definitions.
- Information is for BXDMSKE, the BXDMS share class with the longest track record. MSCI World represents MSCI World (EUR-Hedged) to be consistent with BXDMSKE currency. Please see the additional disclosure on the last page for additional index definitions. The average daily return for BXDMSKE for the 10 best MSCI World TR (EUR) days is 0.35%, while the average return of MSCI World TR (EUR) for the 10 best MSCI World TR (EUR) days was 2.06%.

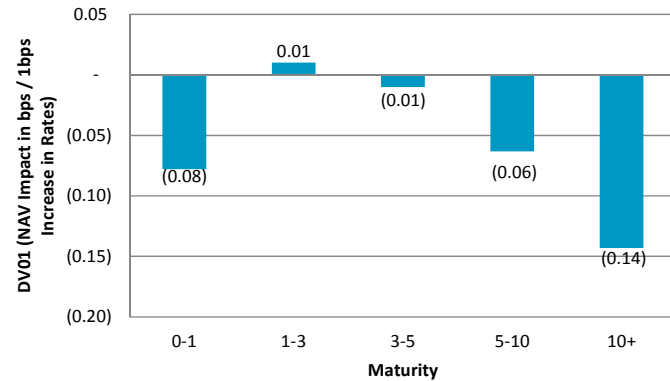
Equity Exposure – Net Sector Breakdown⁽¹⁾



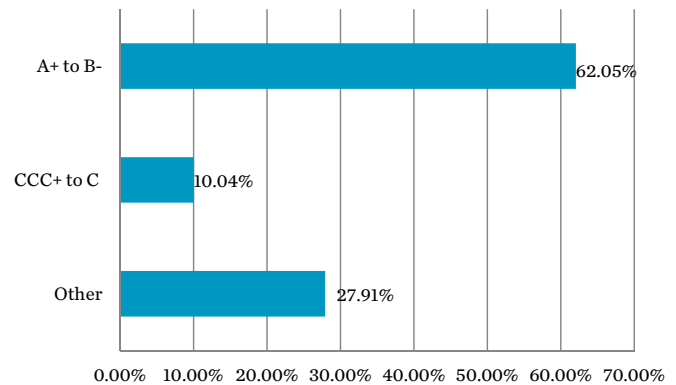
Equity Exposure – Sector Breakdown⁽¹⁾

| | Long | Short | Net |
|------------------------|---------------|---------------|--------------|
| Energy | 0.74% | 1.00% | -0.26% |
| Materials | 2.02% | 0.74% | 1.28% |
| Industrials | 2.12% | 1.90% | 0.22% |
| Consumer Discretionary | 8.10% | 5.67% | 2.43% |
| Consumer Staples | 2.22% | 1.52% | 0.70% |
| Healthcare | 11.85% | 7.28% | 4.57% |
| Financials | 1.69% | 2.90% | -1.21% |
| Real Estate | 0.70% | 0.01% | 0.68% |
| Technology | 6.47% | 2.77% | 3.70% |
| Telecom | 1.34% | 0.14% | 1.20% |
| Utilities | 0.06% | 1.21% | -1.14% |
| Unclassified* | 22.56% | 26.71% | -4.15% |
| Total | 59.87% | 51.85% | 8.02% |

Fixed Income Interest Rate Sensitivity⁽²⁾



Fixed Income Ratings⁽¹⁾



VaR Analysis⁽³⁾

| Date | VaR |
|----------|-------|
| 10/31/16 | 2.28% |

- (1) In the case of non-interest rate instruments, exposure data represents the delta adjusted market value. In the case of interest rate products, exposure data is represented by the 10-year equivalent instrument. Positions of unknown type (if any) are excluded from exposure data. Data is obtained from State Street Fund Services (Ireland) Limited, the administrator for the Fund. The Fund does not guarantee the accuracy of such data. Using the higher Standard & Poor's ("S&P's") and/or Moody's Investor Service ("Moody's") ratings.
- (2) Dv01 represents the estimated change in NAV for the fund, expressed in basis points, for a 1 basis point increase in interest rates across each of the maturity ranges shown. Fixed income instruments are typically held across a number of different currencies.
- (3) Value at Risk ("VaR") is calculated at a 99% confidence level for a one month holding period (20 business days) using a model based on historical Fund data. Please see the Glossary of Terms for a further explanation of VaR.

*Comprised of index futures, options on index futures, ETFs, and ETF options

October Market Commentary

Global financial markets took a tumble in October with both the S&P 500 and MSCI World indices experiencing their worst months since January and the Barclays Global Aggregate Bond Index suffering its worst month in over two years. In the beginning of the month, concerns over U.K Prime Minister Theresa May moving forward with plans to implement Brexit and rumors that the European Central Bank might announce plans to trim its bond purchases before its quantitative easing program is scheduled to end, weighed on risk assets. Despite steady third quarter GDP growth and strong retail sales in China, surprisingly bleak trade data and somewhat disappointing industrial output data from the world's second-largest economy fueled further losses in global equity markets mid-month. And while the U.S. posted its strongest quarterly GDP growth rate in two years, some of the underlying data (namely consumer spending gains that slowed from the previous quarter and a housing sector that actually detracted from growth) may not have been as encouraging as the headline number initially appeared. Perhaps compounding the negative sentiment was the uncertainty surrounding the U.S. presidential election. As the race to the White House sped closer to finish line, investors grew increasingly skittish, as evidenced by the general "risk-off" sentiment we saw throughout the month of October.

While there may be some political and fiscal uncertainty in the near term, we practice the art of the long view and here's how we're thinking about the world right now. You have what we describe as the "four lows." You have fairly low growth around the world. You have low inflation, even though in some places like the U.S. it's starting to pick up. Still, no major central bank is achieving its inflation target. You also have low interest rates, and finally, low unemployment.

The low unemployment phenomenon is a bit peculiar compared to the first three lows. What we seem to have in most major economies, whether you look at the U.S., U.K., Japan or Germany, is this jobs-rich stagnation. You have a weak GDP/strong jobs environment, and when you have such low unemployment, you typically get accelerating wage growth. But that's just not happening. In fact, it seems that wage growth is stuck somewhere between zero to 2.5% in most places around the world.

As we think about the reality of this secular stagnation environment, it results in us allocating assets in the following ways. First, we are strategically reducing our Equity weighting. Second, we are increasing our Credit weighting. And finally, we are increasing our allocations to diversifying Multi-Asset strategies.

Review of Fund Performance¹

The investment objective of Blackstone Diversified Multi-Strategy Fund (the "Fund") is to seek capital appreciation. The Fund aims to achieve its objective by allocating assets among Blackstone² and a variety of investment sub-advisers, each with experience managing non-traditional or "alternative" investment strategies. In October, the Fund's Class I (USD)³ share class returned 0.58%⁴ net of fees and expenses versus -1.91% and -2.78% for the MSCI World and Barclays Global Aggregate Bond Index, respectively. For a summary of Fund performance of the share class to which this report relates, please refer to the "Performance Summary" section of this report.

-
1. The indices presented are indicative and for illustrative purposes only. The volatility of the indices presented may be materially different from that of the performance of the Fund. In addition, these indices employ different investment guidelines and criteria than the Fund; as a result, the holdings in the Fund may differ significantly from the securities that comprise the indices. The performance of these indices has not been selected to represent an appropriate benchmark to compare to the performance of the Fund, but rather is disclosed to allow for comparison of Fund performance to that of well-known and widely recognized indices. A summary of the investment guidelines for these indices is available upon request. In the case of equity indices, performance of the indices reflects the reinvestment of dividends.
 2. BAIA is the Fund's Investment Manager and manages a portion of the Fund's assets directly. Such assets include allocations to a risk premia trading strategy and may also include opportunistic trades. BAIA's fees on directly managed assets are not reduced by a payment to a sub-advisor.
 3. For a summary of Fund performance of other share classes, please refer to the Fund's website: <http://www.blackstone.com/bxdms>
 4. Performance is shown net of all fees and expenses for Share Class I (USD). Past performance may not be a reliable guide to future performance. The value of shares may go down as well as up and there can be no assurance that the Fund will achieve its investment objectives or avoid significant losses. Performance is estimated and unaudited.

Equity Strategies

Equity strategies were the largest contributor to performance in October with value-oriented strategies leading gains. Offsetting some of the factor-based strategies were fundamental exposures in healthcare and financials. Third quarter earnings have thus far been somewhat of a headwind for the portfolio, causing weakness in exposures to a medical device company, managed care companies and asset managers. Additionally financials sector hedges also detracted from performance.

Despite disappointing performance YTD in the fund's Equity strategies, we do not believe that hedge funds' ability to generate alpha in Equity Long/Short or Equity Market Neutral sub-strategies has structurally declined. While market volatility presents challenges, we believe that periods of depressed alpha offer the potential to provide future alpha generation opportunities because the uncoupling of prices from fundamentals can create attractive entry points for managers who are prudent stewards of capital through any dislocation.

Credit Strategies

Credit strategies also contributed to performance during the month with Fixed Income – Asset Backed sub-strategies leading gains. This was due, in part, to positive carry and cash flow generated by the portfolio's commercial mortgage-backed exposures as well as spread tightening in residential mortgage-backed exposures and other asset-backed exposures. We continue to seek to source attractive opportunities in GSE credit risk transfer bonds, where Fannie Mae and Freddie Mac are programmatically selling risk into the market. We added to this exposure in October; however, spreads in these bonds widened during the month leading to some weakness in the portfolio. Commercial mortgage-backed securities index hedges also detracted from performance. Corporate bond exposures in several media companies experienced gains, with one seeing a large positive move driven by the realization of a catalyst. Other corporate bond exposures in industrials, shipping and healthcare also ended the month in positive territory.

Our activity and research in the credit space has increased substantially over the last few months, and we maintain a positive outlook on structured credit and mortgage-backed securities.

Multi-Asset Strategies

Multi-Asset strategies posted gains with Macro Systematic sub-strategies driving performance. Strength came largely from short global bond exposures as global bond markets sold off during the month, especially in the Eurozone and the U.K., with yields rising on the back of rising inflation expectations and positive economic data. Additionally, equity value strategies had positive performance, but it was partially offset by losses in fixed income momentum, fixed income carry and equity momentum strategies. Within emerging markets, performance was slightly positive in October as a result of continued positive developments in Brazil, Argentina and Greece. Greek credit performed well due to an increased probability that the IMF may be involved in the Greek bailout, and Argentine local rates performed well, primarily driven by the appreciation in the peso. Another winner this month was a Brazilian quasi-sovereign exposure, which we believe is still cheap at current levels and has a positive outlook as the company is expected to receive additional government funding.

Across Global Macro strategies more broadly, we believe that divergence in monetary policies across major economies may create opportunities, particularly in rates and currencies. We believe this could play out during the end of 2016 and into 2017 as the European Central Bank and Bank of Japan maintain looser policies while the Federal Reserve perhaps moves in the other direction.

Opinions expressed reflect the current opinions of BAIA as of the date on the cover of this presentation only and should not be the basis of any investment decisions. Past performance is not necessarily indicative of future results. There can be no assurance that the Fund or its underlying managers will achieve their investment objectives or avoid significant losses. The Fund is actively managed and allocations are subject to ongoing revision. The information provided herein has been obtained from or derived from BAIA's underlying managers. BAAM does not guarantee the accuracy or completeness of such information.

All investors should consider the investment objectives, risks, charges and expenses of Blackstone Diversified Multi-Strategy Fund (BXDMS) carefully before investing. The Key Investor Information Document ('KIID'), Prospectus and Supplement contain this and other information about BXDMS and are available on the Blackstone website at www.blackstone.com/BXDMS. All KIIDs are available in English, and certain share class specific KIIDs are available in French, German, Dutch, Danish, Finnish, Swedish, Norwegian, Spanish and Italian as indicated on the Blackstone website. All investors are urged to carefully read the Prospectus, Supplement and KIID in their entirety before investing.

Glossary of Terms:

Beta: A measure of the volatility, or systemic risk, of a security or a portfolio in comparison to the market as a whole.

Standard Deviation: A measure of the dispersion of a set of data from its mean. The more spread apart the data, the higher the deviation. Standard deviation is calculated as the square root of variance.

Alpha: A risk-adjusted performance measure that represents the average return on a portfolio over and above that predicted by the capital asset pricing model (CAPM), given the portfolio's beta and the average market return.

Sharpe Ratio: A ratio to measure risk-adjusted performance. The Sharpe Ratio is calculated by subtracting the risk-free rate – such as that of the 10-year U.S. Treasury bond – from the rate of return for a portfolio and dividing the result by the standard deviation of the portfolio returns. The greater a portfolio's Sharpe Ratio, the better its risk-adjusted performance has been.

Delta: The ratio comparing the change in the price of the underlying asset to the corresponding change in the price of a derivative.

Gross Exposure: Reflects the aggregate of long and synthetic short investment positions in relation to the net asset value. For example, if BXDMS has 60% long exposure and 50% synthetic short exposure to a particular asset class, then BXDMS has 110% gross exposure to that asset class. The gross exposure is one indication of the level of leverage in a portfolio.

Net Exposure: This is the difference between long and synthetic short investment positions in relation to the net asset value. For example, if BXDMS has 60% long exposure and 50% synthetic short exposure to a particular asset class, then BXDMS is 10% net exposure to that asset class.

Long: A long position occurs when an individual owns securities.

Synthetic Short: Short selling an underlying security through the use of derivatives. Synthetic Short positions can generate returns when the price of the underlying security declines.

VaR: A statistical technique used to measure and quantify the level of financial risk within a firm or investment portfolio over a specific time frame. Value at risk is used by risk managers in order to measure and control the level of risk which the firm undertakes. The risk manager's job is to ensure that risks are not taken beyond the level at which the firm can absorb the losses of a probable worst outcome.

Glossary of Indices:

Market indices obtained through Bloomberg. Indices are presented are indicative and for illustrative purposes only, are unmanaged and investors cannot invest in an index. The volatility of the indices presented may be materially different from that of the performance of BXDMS. In addition, the indices employ different investment guidelines and criteria than BXDMS; as a result, the holdings in BXDMS may differ significantly from the securities that comprise the indices. The performance of the indices has not been selected to represent an appropriate benchmark to compare to the performance of BXDMS, but rather is disclosed to allow for comparison of BXDMS performance to that of well-known and widely recognized indices. In the case of equity indices, performance of the indices reflects the reinvestment of dividends.

Barclays Global Aggregate Bond Index: provides a broad-based measure of the global investment grade fixed-rate debt markets. It is comprised of the U.S. Aggregate, Pan-European Aggregate, and the Asian-Pacific Aggregate Indexes.

MSCI World Index: A market capitalization weighted index designed to provide a broad measure of equity-market performance throughout the world. The MSCI World is maintained by Morgan Stanley Capital International, and is comprised of stocks from all the developed markets in the world.

Important Disclosure:

Blackstone has agreed to waive its fees and/or reimburse expenses of the Fund so that "Other Expenses" will not exceed 0.45% (annualized). For this purpose, "Other Expenses" includes all expenses incurred in the business of the Fund other than (i) establishment expenses relating to the Fund; (ii) investment management fees; (iii) Performance Fees or Additional Performance Fees; (iv) distributor fees; (v) Eligible Collective Investment Scheme fees and expenses, (vi) brokerage and trading costs, (vii) interest payments, (viii) taxes, and (ix) extraordinary expenses. Blackstone may terminate or modify this arrangement at any time in its sole discretion upon 30 days' notice in writing to the Fund's shareholders.

Important Risks:

There can be no assurance that BXDMS will achieve its investment objective. It should be appreciated that the value of Shares may go down as well as up. An investment in a Fund involves investment risks, including possible loss of the entire amount invested. The capital return and income of BXDMS is based on the capital appreciation and income on the investments it holds, less expenses incurred. Therefore, the Fund's return may be expected to fluctuate in response to changes in such capital appreciation or income. The following is a summary description of certain principal risks of investing in BXDMS:

- General economic and market conditions can affect the price and volatility of investments.
- The success of the Fund depends upon BAIA's skill in determining the Fund's allocation to alternative investment strategies and in selecting the best mix of sub-advisers. There can be no guarantee that sub-advisers will stick to the Investment strategy for which they were selected, or that these strategies will be successful.
- Sub-advisers may make investment decisions which conflict with each other; for example, sub-advisers may hold economically offsetting positions or may purchase or sell the same security at the same time without aggregating their transactions. This may result in unnecessary brokerage and other expenses and the Fund may incur losses as a result.
- Some of the sub-advisers selected may hold only a small number of investments, or assets that move closely in line with assets held by other sub-advisers.
- The Fund's investments will include shares, bonds and FDI. Each of these will be exposed to the risks specific to the type of asset in question. In particular, the use of FDI may result in substantial gains or losses that are greater in magnitude than the original amount invested.
- The Fund may invest in countries with a weak legal or financial framework where it can be hard to enforce ownership rights or repatriate funds.
- The Fund may invest in currencies other than its base currency. The success of measures to protect the Fund or a Class against currency movements cannot be certain.
- Changes in exchange rates may have an adverse effect on the value price or income of the product.
- The Fund may invest in FDI that derive their value from other assets in the expectation of making a profit if the price of the assets falls; theoretically, this could result in an infinite loss.
- The insolvency of any institutions providing services such as safekeeping of assets or acting as counterparty to derivatives or other instruments, may expose the Fund to financial loss.
- Low trading volumes, lack of buyers, large positions or legal restrictions may limit or prevent the Fund from selling particular assets quickly and/or at desirable prices.

For further information on the risks faced by the Fund, see "Risk Factors" in the Prospectus and Supplement for the Fund, available from www.blackstone.com/BXDMS